

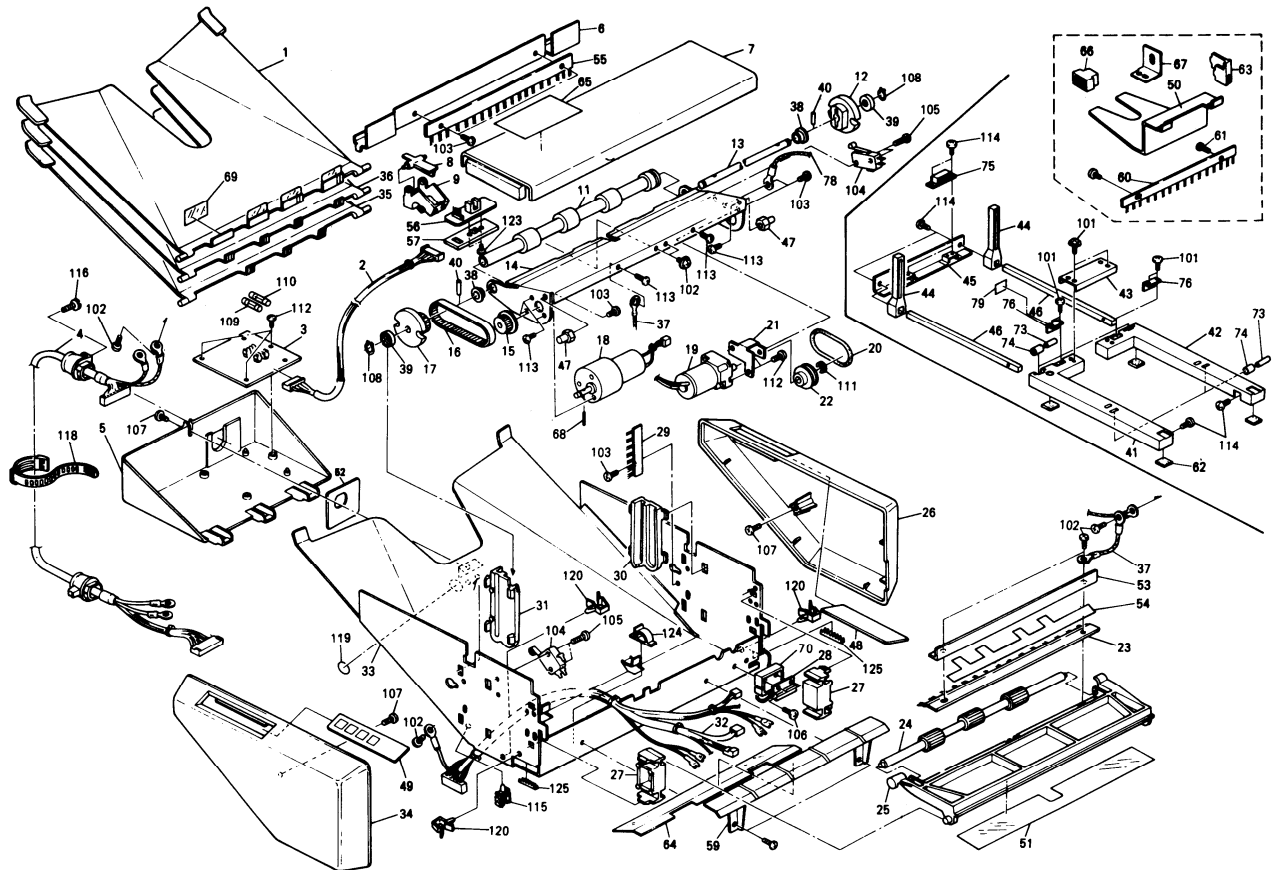
**CS1060 (A467)**

## **Sorter (A467)**

<b>1. Sorter (A467)</b>	<b>2</b>
<b>2. Sorter Main Board (A467)</b>	<b>4</b>
<b>3. Main Harness (A467)</b>	<b>6</b>
<b>Parts Index</b>	<b>10</b>

# 1. SORTER (A467)

July 30, '88



# 1. SORTER (A467)

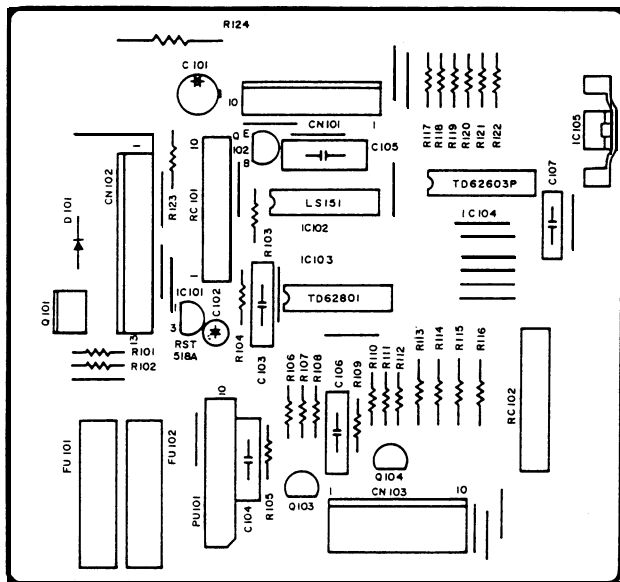
July 30, '88

Index No.	Part No.	Description	Q'ty Per Assembly
1	A467 3011	Sorter Bin - Top	1
2	6801 5620	Operation Harness - 115V	1
2	6801 5640	Operation Harness - 220/240V	1
3	6801 5510	Main Board	1
4	A467 5610	Interface Harness	1
5	A467 6161	Lower Cover - RIC, NSA	1
6	6801 6211	Top Stay	1
7	A467 6101	Top Cover - RIC, NSA	1
8	6802 2357	Exit Sensor Feeler	1
9	6802 2355	Exit Sensor Bracket	1
11	6801 2123	Lower Exit Roller	1
12	6802 2237	Transfer Wheel - B	1
13	6802 2213	Bin Drive Shaft	1
14	6801 2113	Lower Guide Plate - 220V	1
14	6801 2115	Lower Guide Plate - 115V	1
15	6802 2313	Timing Pulley - 12T	1
16	6802 2317	Timing Belt - 80XL	1
17	6802 2233	Transfer Wheel - A	1
18	6802 5406	Bin Drive Motor	1
19	A423 5410	DC Motor - 24V 2.9W	1
20	6801 2322	Belt - M3x175	1
21	6801 2331	Bracket - Roller Drive Motor	1
22	6801 2335	Roller Drive Pulley	1
23	6802 2031	Antistatic Brush - Feed Out	1
24	6801 2021	Upper Exit Roller	1
25	6802 2015	Upper Guide Plate	1
26	A467 6141	Rear Cover - RIC, NSA	1
27	6802 1025	Up-Down Plate Guide	2
28	6802 5640	Reed Switch	1
29	6802 3161	Antistatic Brush - Bin	1
30	6802 1023	Rear Slot Liner	1
31	6802 1021	Feed Out Roller - Driven	1
32	6801 5600	Sorter Main Harness - 115V	1
32	6801 5630	Sorter Main Harness - 220/240V	1
33	A467 1010	Sorter Frame	1

Index No.	Part No.	Description	Q'ty Per Assembly
34	A467 6121	Front Cover - RIC, NSA	1
35	A414 3111	Sorter Bin - Odd	4
36	A414 3151	Sorter Bin - Even	4
37	6802 5703	Grounding Wire	1
38	6802 2215	Bushing	2
39	6802 2239	Slot Roller	2
40	6802 2217	Parallel Key	2
41	6801 7111	Front Mounting Base	1
42	6801 7121	Rear Mounting Base	1
43	6801 7131	Base Plate Bracket	1
44	6801 7141	Base Plate Stay	2
45	6801 7151	Base Plate Angle	1
46	6802 7021	Sliding Bar	2
47	6802 2117	Shaft - Lower Guide Plate	2
48	A467 6181	Side Cover - RIC, NSA	1
49	A467 5410	Operation Panel - A4	1
49	A467 5420	Operation Panel - LT	1
50	6801 7211	Proof Tray	1
51	6802 2035	Upper Reinforcement Guide	1
52	6802 5961	Strain Relief Plate	1
53	6802 2032	Antistatic Brush Angle	1
54	6801 2032	Upper Guide Plate Mylar	1
55	6769 2272	Antistatic Brush	1
56	6801 5520	Exit Sensor Board	1
57	6801 5911	Insulating Sheet - Exit Sensor	1
59	6801 2511	Lower Guide Support Plate	1
60	6801 7531	Antistatic Brush - Copier Exit	1
61	6801 7532	Shoulder Screw - M3	1
62	6801 7123	Mounting Base Cushion	4
63	6802 7131	Mounting Lock	2
64	6801 2514	Support Plate Mylar	1
65	A467 7802	Sorter Misfeed Decal	1
66	6801 7510	Reed Switch Magnet	1
67	6801 7521	Bracket - Interface Harness	1
68	6802 2315	Drive Pulley Shaft	1

Index No.	Part No.	Description	Q'ty Per Assembly
69	6801 3145	Paper Stopper	4
70	6802 5951	Mount - Interlock Sensor	1
71	6801 3145	Paper Stopper	1
73	6802 7069	Base Roller Shaft	4
74	6802 7070	Base Roller	4
75	6802 7125	Magnet - Sorter Mounting Base	2
76	6802 7023	Magnet Catch Angle	2
78	6802 5720	Grounding Wire	2
*	A467 6518	CS1040 Installation Procedure - Eng	1
*	A467 6528	CS1040 Installation Procedure - Mul	1
79	6801 1765	Magnet Catch Mylar	1

Index No.	Part No.	Description	Q'ty Per Assembly
101	0965 4006W	Tapping Screw - M4x6	1
102	0965 4008W	Tapping Screw With Flat Washer - M4x8	8
103	0434 0060W	Tapping Screw - M4x6	4
104	1204 1376	Microswitch	2
105	0313 0140W	Philips Pan Head Screw - M3x14	4
106	0314 0140W	Philips Pan Head Screw - M4x14	2
107	0354 0080F	Philips Trus Head Screw - M4x8	1
108	0727 0060E	Retaining Ring - M6	2
109	1107 0406	Fuse - 250V,0.5A	1
110	1107 0409	Fuse - 1A	1
111	0720 0040E	Retaining Ring - M4	1
112	0314 0060W	Philips Pan Head Screw - M4x6	2
113	0313 0050W	Philips Pan Head Screw - M3x5	6
114	0314 0080W	Philips Pan Head Screw - M4x8	8
115	1105 0108	Nylon Clip	2
116	0315 0080M	Philips Pan Head Screw - M5x8	1
117	0313 0100W	Philips Pan Head Screw - M3x10	2
118	2803 0006	Cord Binder	1
119	1005 0335	Earth Mark	1
120	1105 0087	Clamp	2
121	0965 3010W	Tapping Screw With Flat Washer - M3x10	2
122	1105 0042	TY - Wrap	20
123	0965 3008W	Tapping Screw With Flat Washer - M3x8	2
124	1105 0024	Cord Clamp DK-07F	1
125	1106 0180	Snap Bushing - 3.3mm	1



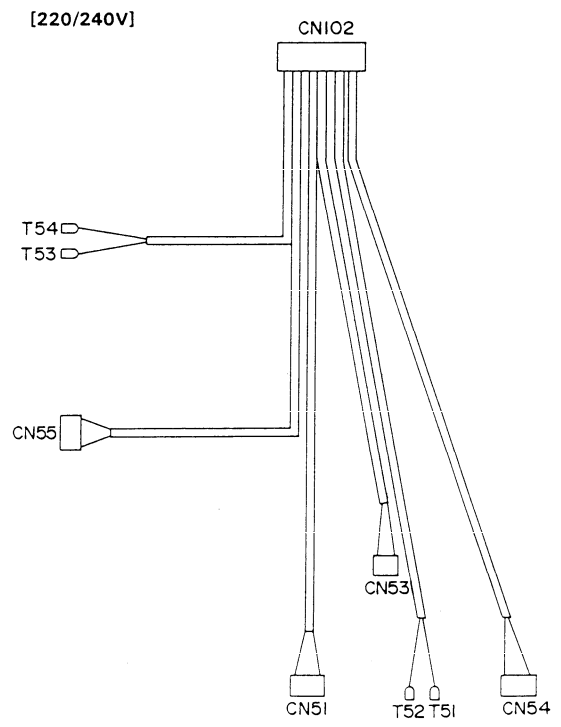
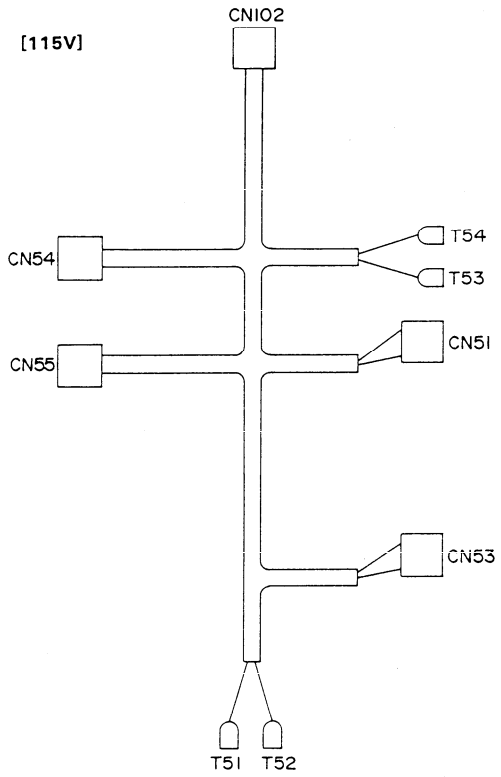
## 2. SORTER MAIN BOARD (A467)

July 30, '88

Index No.	Sketch No.	Parts No.	Description	Qty Per Assembly
*		6801 5510	Main Board	1
1	<b>IC101</b>	1408 0408	IC - PST518A	1
2	<b>IC102</b>	1407 1807	IC - TC40H151P	1
3	<b>IC103</b>	1407 1698	IC - TD62801P	1
4	<b>IC104</b>	1407 1607	IC - TD62603P	1
5	Q101	1400 0212	Transistor - 2SB605	1
6	Q102	1400 0072	Transistor - 2SC372Y	1
7	Q103, 104	1400 0135	Transistor - 2SA1015-Y	2
8	PU101	1401 0325	Transistor - PU4320	1
9	D101	1401 0832	Diode - DSA1A1	1
10	R123	1611 4121	Resistor - 120 OHM	1
11	R101, R104, R117-122	1611 4102	Resistor - 1K OHM 1/4T ±5%	8
12	R105, R109	1611 4222	Resistor - 2.2K OHM 1/4T ±5%	2
13	R106-108, R110-112	1611 4472	Resistor - 4.7K OHM 1/4T ±5%	6
14	R113-116	1611 6222	Resistor - 2.2K OHM 1/2T ±5%	4
15	R103	1611 4153	Resistor - 15K OHM 1/4T	1
16	C101	1604 1488	Capacitor - 35V,47MF	1
17	C102	1604 1382	Capacitor - 10µF 50V	1
18	C103-107	1606 1109	Capacitor - 50V,0.1MF	5
19	RC101,102	1602 0911	RC Array - RC082	2
20	FU101	1107 0406	Fuse - 250V,0.5A	1
		1104 0307	Fuse Clip	2
21	FU102	1107 0409	Fuse - 1A	1
		1104 0307	Fuse Clip	2
22	CN101	1103 1732	Connector - 10P	1
23	CN102	1103 1735	Connector - 13P	1
24	CN103	1103 1690	Connector - 10P	1
25	JP	1002 0307	Jumper Wire	
26	IC105	1408 0306	Resistor - 47K OHM 1/4W ±5%	1
27	R124	1600 0510	Resistor - 15 OHM ±5%	1
28	IC105	1005 0799	Heat Sink - H0-220	1
29	R102	1611 4473	Resistor - 47K OHM 1/4T ±5%	1

Index No.	Sketch No.	Parts No.	Description	Qty Per Assembly

### 3. MAIN HARNESS (A467)



### 3. MAIN HARNESS (A467)

July 30, '88

Index No.	Sketch No.	Parts No.	Description	Q'ty Per Assembly
*		6801 5600	Sorter Main Harness - 115V	1
*		6801 5630	Sorter Main Harness - 220/240V	1
1	CN102	1102 1921	Connector - 13P	1
		1100 1327	Contact	13
2	CN54	1102 0415	Connector Housing	1
		1100 0861	Socket Terminal - Large	2
3	CN55	6802 5817	Connector - 5P	1
		6802 5823	Key - PK/00C	1
4	CN51, CN53	1102 1964	Connector - 2P	2
		1100 1328	Contact	4
5	T1,2, T5,6	1100 0298	Solid Strand	4

Index No.	Sketch No.	Parts No.	Description	Q'ty Per Assembly
-----------	------------	-----------	-------------	-------------------



# **PARTS INDEX**

Parts No.	Description	Page and Index No.
A467 1010	Sorter <b>Frame</b>	3-33
A467 3011	Sorter Bin - Top	3-1
A467 5410	Operation Panel - AL	3-49
A467 5420	Operation Panel - LT	3-49
A467 5610	Interface Harness	3-4
A467 6101	Top Cover - RIC, NSA	3-7
A467 6121	Front Cover - RIC, <b>NSA</b>	<b>3-34</b>
<b>A467 6141</b>	Rear Cover - RIC, NSA	3-26
A467 6161	Lower Cover - RIC, NSA	3-5
A467 6181	Side Cover - RIC, NSA	3-48
A467 6518	CS1040 Installation Procedure - Eng	3-*
A467 6528	CS1040 Installation Procedure - Mul	3-*
A467 7802	Sorter Misfeed Decal	3-65

Parts No.	Description	Page and Index No.
A414 3111	Sorter Bin - Odd	3-35
A414 3151	Sorter <b>Bin</b> - Even	3-36
A423 5410	DC Motor - 24V 2.9W	3-19
6769 2272	Antistatic Brush	3-55
6801 1765	Magnet Catch Mylar	3-79
6801 2021	Upper Exit Roller	3-24
6801 2032	Upper Guide Plate Mylar	3-54
6801 2113	Lower Guide Plate - 220V	3-14
6801 2115	Lower Guide Plate - 115V	3-14
6801 2123	Lower Exit Roller	3-11
6801 2322	Belt - M3x175	3-20
6801 2331	Bracket - Roller Drive Motor	3-21
6801 2335	Roller Drive Pulley	3-22
6801 2511	Lower Guide Support Plate	3-59
6801 2514	Support Plate Mylar	3-64
6801 3145	Paper Stopper	3-69
6801 3145	Paper Stopper	3-71
6801 5510	Main Board	3-3
6801 5510	Main Board	5-*
6801 5520	Exit Sensor Board	3-56
6801 5600	Sorter Main Harness - 115V	3-32
6801 5600	Sorter Main Harness - 115V	7-*
6801 5620	Operation Harness - 115V	3-2
6801 5630	Sorter Main Harness - 220/240V	3-32
6801 5630	Sorter Main Harness - 220/240V	7-*
6801 5640	Operation Harness - 220/240V	3-2
6801 5911	Insulating Sheet - Exit Sensor	3-57
6801 6211	Top Stay	3-6
6801 7111	Front Mounting Base	3-41
6801 7121	Rear Mounting Base	3-42
6801 7123	Mounting Base Cushion	3-62
6801 7131	Base Plate Bracket	3-43
6801 7141	Base Plate Stay	3-44
6801 7151	Base Plate Angle	3-45
6801 7211	Proof Tray	3-50

Parts No.	Description	Page and Index No.
6801 7510	Reed Switch Magnet	3-66
6801 7521	Bracket - Interface Harness	3-67
6801 7531	Antistatic Brush - Copier Exit	3-60
6801 7532	Shoulder Screw - M3	3-61
6802 1021	Feed Out Roller - Driven	3-31
6802 1023	Rear Slot Liner	3-30
6802 1025	Up-Down Plate Guide	3-27
6802 2015	Upper Guide Plate	3-25
6802 2031	Antistatic Brush - Feed Out	3-23
6802 2032	Antistatic Brush Angle	3-53
6802 2035	Upper Reinforcement Guide	3-51
6802 2117	Shaft - Lower Guide Plate	3-47
6802 2213	Bin Drive Shaft	3-13
6802 2215	Bushing	3-38
6802 2217	Parallel Key	3-40
6802 2233	Transfer Wheel - A	3-17
6802 2237	Transfer Wheel - B	3-12
6802 2239	Slot Roller	3-39
6802 2313	Timing Pulley - 12T	3-15
6802 2315	Drive Pulley Shaft	3-68
6802 2317	Timing Belt - 80XL	3-16
6802 2355	Exit Sensor Bracket	3-9
6802 2357	Exit Sensor Feeler	3-8
6802 3161	Antistatic Brush - Bin	3-29
6802 5406	Bin Drive Motor	3-18
6802 5640	Reed Switch	3-28
6802 5703	Grounding Wire	3-37
6802 5720	Grounding Wire	3-78
6802 5817	Connector - 5P	7-3
6802 5823	Key - PK/00C	7-3
6802 5951	Mount - Interlock Sensor	3-70
6802 5961	Strain Relief Plate	3-52
6802 7021	Sliding Bar	3-46
6802 7023	Magnet Catch Angle	3-76
6802 7069	Base Roller Shaft	3-73

Parts No.	Description	Page and Index No.
6802 7070	Base Roller	3-74
6802 7125	Magnet - Sorter Mounting Base	3-75
6802 7131	Mounting Lock	3-63

Parts No.	Description	Page and Index No.
0313 0050W	Philips Pan Head Screw - M3x5	3-113
0313 0100W	Philips Pan Head Screw - M3x10	3-117
0313 0140W	Philips Pan Head Screw - M3x14	3-105
031.4 0060W	Philips Pan Head Screw - M4x6	3-112
0314 0080W	Philips Pan Head Screw - M4x8	3-114
0314 0140W	Philips Pan Head Screw - M4x14	3-106
0315 0080M	Philips Pan Head Screw - M5x8	3-116
0354 0080F	Philips Trus Head Screw - M4x8	3-107
0434 0060W	Tapping Screw - M4x6	3-103
0720 0040E	Retaining Ring - M4	3-111
0727 0060E	Retaining Ring - M6	3-108
0965 3008W	Tapping Screw With Flat Washer - M3x8	3-123
0965 3010W	Tapping Screw With Flat Washer - M3x10	3-121
0965 4006W	Tapping Screw - M4x6	3-101
0965 4008W	Tapping Screw With Flat Washer - M4x8	3-102
1002 0307	Jumper Wire	5-25
1005 0335	Earth Mark	3-119
1005 0799	Heat Sink - H0-220	5-28
1100 0298	Solid Strand	7-5
1100 0861	Socket Terminal - Large	7-2
1100 1327	Contact	7-1
1100 1328	Contact	7-4
1102 0415	Connector Housing	7-2
1102 1921	Connector - 13P	7-1
1102 1964	Connector - 2P	7-4
1103 1690	Connector - 10P	5-24
1103 1732	Connector - 10P	5-22
1103 1735	Connector - 13P	5-23
1104 0307	Fuse Clip	5-20
1104 0307	Fuse Clip	5-21
1105 0024	Cord Clamp DK - 07F	3-124
1105 0042	TY -Wrap	3-122
1105 0087	Clamp	3-120
1105 0108	Nylon Clip	3-115
1106 0180	Snap Bushing - 3.3mm	3-125

Parts No.	Description	Page and Index No.
1107 0406	Fuse - 250V,0.5A	3-109
1107 0406	Fuse - 250V,0.5A	5-20
1107 0409	Fuse - 1A	3-110
1107 0409	Fuse - 1A	5-21
1204 1376	Microswitch	3-104
1400 0072	Transistor - 2SC372Y	5-6
1400 0135	Transistor - 2SA1015-Y	5-7
1400 0212	Transistor - 2SB605	5-5
1401 0325	Transistor - PUL320	5-8
1401 0832	Diode - DSA1A1	5-9
1407 1607	IC - TD62603P	5-L
1407 1698	IC - TD62801P	5-3
1407 1807	IC - TClOH151P	5-2
1408 0306	Resistor - 47K OHM 1/4W ±5%	5-26
1408 0408	IC - PST518A	5-1
1600 0510	Resistor - 15 OHM ±5%	5-27
1602 0911	RC Array - RC082	5-19
1604 1382	Capacitor - 10µF 50V	5-17
1604 1488	Capacitor - 35V,47MF	5-16
1606 1109	Capacitor - 50V,0.1MF	5-18
1611 4102	Resistor - 1K OHM 1/4T ±5%	5-11
1611 4121	Resistor - 120 OHM	5-10
1611 4153	Resistor - 15K OHM 1/4T	5-15
1611 4222	Resistor - 2.2K OHM 1/4T ±5%	5-12
1611 4472	Resistor - 4.7K OHM 1/4T ±5%	5-13
1611 4473	Resistor - 47K OHM 1/4T ±5%	5-29
1611 6222	Resistor - 2.2K OHM 1/2T ±5%	5-14
2803 0006	Cord Binder	3-118